

For Sale
1553 Hyde Park Road.
London, Ontario

GLEED



CONCEPTUAL IMAGE - SUBJECT TO CHANGE

1553 Hyde Park Road
London, Ontario

Asking Price:

\$3,500,000

- Commercial/Residential Development
- Busy Commercial Node at Hyde Park and Gainsborough Road
- Property size: .98 acres
- Building Proposal :
 - 8,900 sq ft commercial
 - 70 residential units
- Zoning: BDC 1 & 2

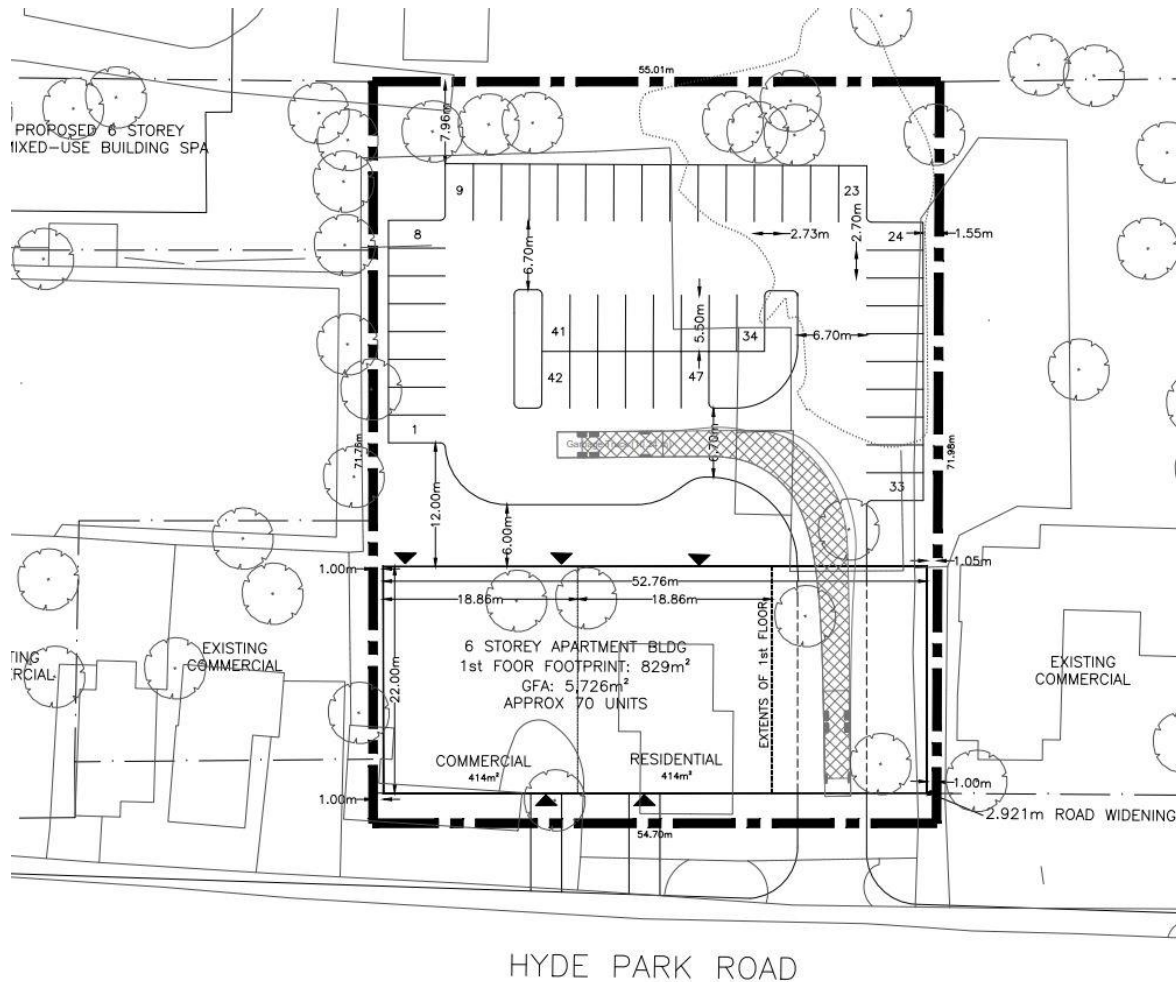
RICHARD GLEED
Broker of Record/President
rick@gleedcommercial.com
519.518.8080

MEGAN GLEED
Sales Representative
megan@gleedcommercial.com
519.518.8080

GLEED Inc., Real Estate Brokerage
159 Windermere Road
London, Ontario N6G 4J5

1553 Hyde Park Road London, Ontario

GLEED



Designated as a “Main Street” in the London Plan, development along Hyde Park Road encourages commercial and residential repurposing, intensification, and infill. The “inward and upward” philosophy of The London Plan compliments the proposed 6-storey mixed-use building containing 70 residential units and a ground floor area of 8,900 sq ft for commercial use.

GLEED Inc., Real Estate Brokerage
159 Windermere Road
London, Ontario N6G 4J5

T 519 518 8080
F 519 518 8081

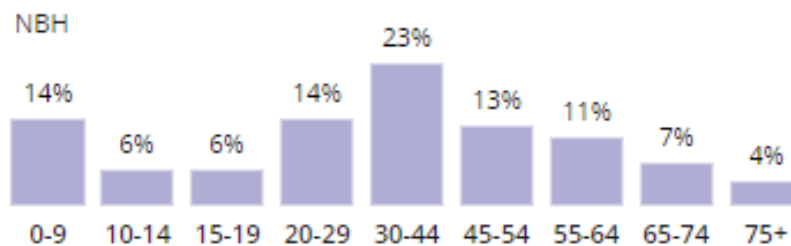
1553 Hyde Park Road
London, Ontario

GLEED

HYDE PARK NEIGHBOURHOOD DEMOGRAPHICS

Neighbourhood Population* : 3,502
Community Population (N6H): 48,975
London City Population: 435,334

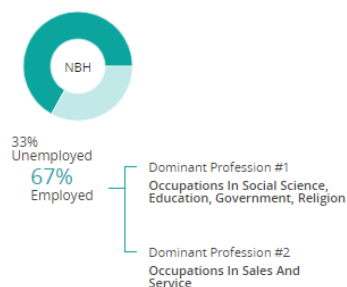
Age Distribution



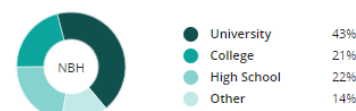
Socio-Economic

	NBH	COM	CITY
Avg. Household Income	\$117,850	\$129,475	\$94,838

Employment



Highest Level of Education



* Source Geowarehouse 2024

GLEED Inc., Real Estate Brokerage
159 Windermere Road
London, Ontario N6G 4J5